

Higher efficiency.
Proven durability.



Marinas and boat yards are proving grounds for efficiency and durability.



M5200H - Florida, USA

After more than 25 years designing, building, and supporting our complete line of marine forklifts, Marine Travelift machines continue to surpass the rest with higher comparable lifting capacities that separate each model into a class of their own.

Nonstop lifting and hauling from sunup to sundown. Endless exposure to the elements. Your marina's productivity relies on dependable forklifts, so you can operate with greater versatility every day and withstand harsh marine conditions for years to come.

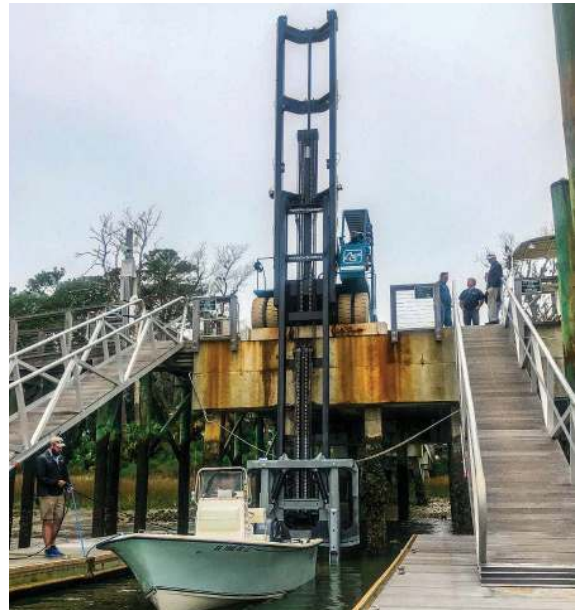
Our marine forklifts are built around an easy to control hydrostatic drive system to help you meet these challenges head on. Reinforced with powerful swing style forks and all-around corrosion resistance, our forklifts deliver the continued productivity your yard demands.

Solutions that keep your machines working hard.

Our priority is to exceed your expectation using the highest safety and performance standards. So whatever you need to lift, your machine will perform with best-in-class efficiency, durability, and versatility.

From design to delivery and beyond, our team of engineers, technicians and industry experts helps to ensure your machine performs at its best, day in and day out.

- **Certified Marine Travelift distributor network** provides local support to diagnose and coordinate repairs and increase uptime.
- **Genuine Marine Travelift replacement parts** are made specifically to match the original specifications of your machine.
- **Highly trained and experienced factory-based technicians** are ready to be dispatched for on-site analysis and repairs.
- **Large In-house technical support staff** will work with you and your local dealer to find solutions that keep your machine functioning at peak performance.



M2300H - Palmetto Bluff, North Carolina



M2800H - Sarasota, Florida

Marine Forklifts

| Model | Standard Wheelbases | Capacity (*Equivalent) | Load |
|----------|---------------------|------------------------|--------|
| M1500H | 105" | 15,000 LBS. | 8 FT. |
| M2000H | 129", 105" | 20,000 LBS. | 8 FT. |
| M2300H | 140", 129", 105" | 23,000 LBS. | 12 FT. |
| M2600H | 129" | 26,300 LBS. | 8 FT. |
| M2800H | 160", 129" | 27,000 LBS. | 12 FT. |
| M3600H | 160" | 36,000 LBS. | 12 FT. |
| M5200H | 160" | 52,000 LBS. | 14 FT. |
| & Larger | | | |

Visit marinetravelift.com/forklifts to see product videos of our forklifts in action, as well as a current list of available features and options.

STANDARD FEATURES



HYDRO ML DRIVE HYDROSTATIC DRIVE

An industry exclusive - Operator easily maintain precise speed and control in forward and reverse while keeping their hands free for steering, hydraulic lift controls and other pilot operations. The closed loop design keeps constant pressure on the system, which means that when an operators foot isn't on the pedal, that there is zero movement, even at a slight grade.



DUAL DIRECTIONAL CONTROL PEDAL

Easily control speed with this unique pressure sensitive feature that moves the forklift both forward and in reverse without having to manipulate functions with your hands.



CONVENIENT SERVICE ACCESS

Major systems are easily serviced and maintained in less time with the "gull-wing" service doors and maintenance platform.



FORWARD/SIDE MOUNTED CAB

Ability to see around the carried vessel and forward positioning to increase visibility during launching and retrieval



CONTROLS

Lift every load with greater precision and efficiency using electronic throttle and pilot operated hydraulic controls.



CORROSION RESISTANCE

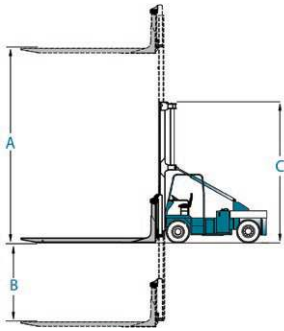
Prolong paint life and corrosion resistance in harsh marine environments with our PPG paint system incorporating a zinc primer and siloxane top coat along with stainless steel tubing.



DURABLE WING STYLE FORKS

Consistency of improved fork positioning, versatility and boat handling control. Nickel plated chain anchors, stainless steel carriage cylinders, and carriage fittings provide the highest level of durability.

OPTIONS



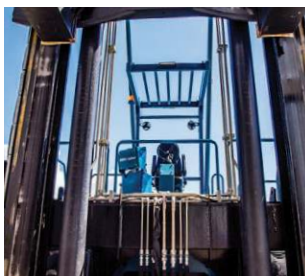
VARIOUS MAST HEIGHTS

Masts are available in a variety of heights and configurations to meet the needs of your yard.



SHORTER WHEEL BASE

Improve mobility and maneuverability in confined spaces with added control.



CENTER MOUNTED CAB WITH WIDE VIEW MAST

Center-mounted operators cab with a wide view mast designed to provide optimal visibility for the operator.



GALVANIZED CARRIAGE AND FORKS PACKAGE

Additional corrosion protection through hot dipped processes and a clear-coat top layer finish along with stainless steel fittings for optimal corrosion resistance.



WIRELESS REMOTE CONTROLS

Remotely raise and lower the forks while launching or retrieving boats.



SOLID NON-MARKING TIRES

Eliminate the limited risk of a flat tire while promoting a cleaner operation.



CAMERA SYSTEMS

Improve visibility with multiple views from mounted locations on the carriage, the rear of the forklift, and any other locations all displayed on an LCD screen contained within weather resistant housing mounted in the cab.



MOLDED EXTRUSION FORK COVERS

These rubber covers provide additional protection for your forks.



M2300H - EDGEWATER, FL

Unit features standard side cab with a 129" wheelbase.

M1500H - Port Clinton, OH



M2000H-Englewood,FL





M2800H - FT. MYERS, FL

Unit features optional center cab with wide view mast and 129" wheelbase.

M2600H-Tavernier,FL



M5200H-St.Petersburg,FL



MARINE TRAVELIFT®

Trusted Name, Proven Value

49 E Yew Street
Sturgeon Bay, WI 54235 USA

marinetraavelift.com

sales@marinetraavelift.com

Phone: +1.920.743.6202

Fax: +1.920.743.1522

#marinetraavelift



Information contained within this brochure is believed to be correct at time of printing. Not all accessories shown in photos or described may be available as standard equipment or as an option. Options, features and specifications are subject to change without notice.